



HIGHLIGHTS MUSICIAN & DJ

LDsystems 



Designed in Germany,
heard
around the world!

LD Systems® – Your Sound. Our Mission.

As a user of professional audio technology, you are in good hands with LD Systems. Your enthusiasm is our benchmark. Whether you are a sound engineer, a mobile DJ, a musician, a band, a singer-songwriter, a wedding singer or fitness trainer or just a sound addict like us – your needs are at the heart of every decision we make.

We are passionate about developing professional audio solutions that make your life easier on the job and meet your high expectations for sound and performance.

Of course, we are also happy to support you beyond your purchase. With us, you'll experience some of the best customer support in the industry – true to the motto "Your Sound. Our Mission."

LD Systems' professional audio product lines include innovative, high-performance PA systems, advanced speakers and subwoofers for live events, installations or battery-powered outdoor use.

LD Systems wireless microphone and in-ear monitoring systems provide full freedom of movement and reliability for artists on stage and excellent speech intelligibility for speakers in conferences.

04

ICOA[®]
PRO
SERIES

06

ANNY[®]
SERIES

MON G3
SERIES

08

MAUI[®] G3 MIX

10



12



MAUI[®] SERIES

DAVE G4X
SERIES

14



16



ICOA[®] SERIES

18



CURV[®] 500

24



U300[®]
U500[®]
SERIES

STINGER[®] G3

20



ICOA® PRO

HEADLINING PUNCH.

NEW

The ICOA® PRO Series combines advanced coaxial design, a powerful yet compact 21" subwoofer, and a rugged housing – engineered to meet the demands of today's audio professionals. These active loudspeakers deliver clear highs, rich mids and deep, punchy bass with impressive headroom.

With intelligent SysCore® DSP, free ICOA PRO App, Bluetooth® 5.1 streaming, and flexible mounting options, ICOA® PRO is particularly flexible – ideal for a wide range of applications and users, from club gigs, DJs, live bands, rental companies and permanent installations. ICOA® PRO delivers reliable performance, professional features, and impressive Headlining Punch.

ULTRA-ROBUST HOUSING

RUGGED ABS TOPS WITH STEEL REINFORCEMENT AND PU-COATED BIRCH PLYWOOD SUB

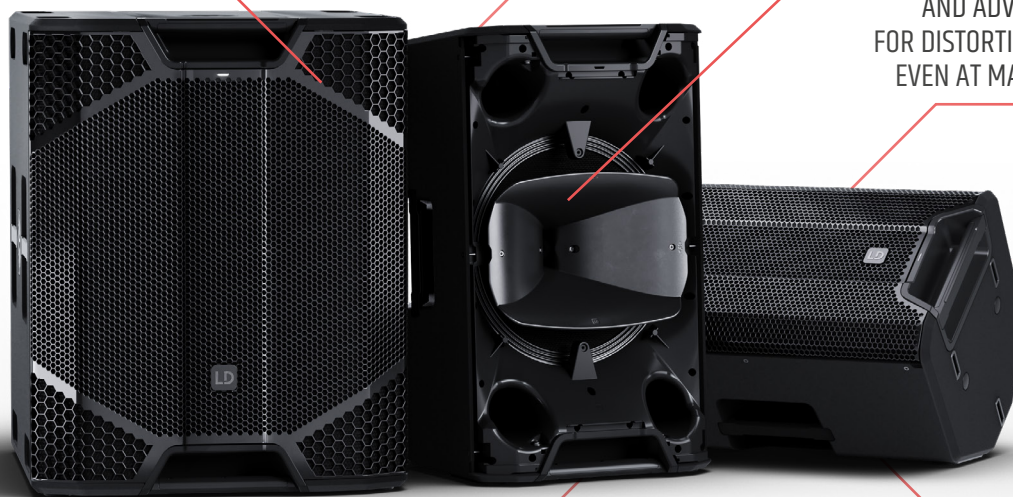
HIGH-POWER ALL-ROUNDERS

WITH PREMIUM COMPONENTS FOR FULL-RANGE, SATELLITE, MONITOR AND INTEGRATED APPLICATIONS

ROTATABLE HORN

SYSCORE® DSP WITH FIR/IIR FILTERS

AND ADVANCED LIMITERS
FOR DISTORTION-FREE SOUND,
EVEN AT MAXIMUM VOLUME



EASY HANDLING

8 ERGONOMIC HANDLES AND OPTIONAL CASTOR BOARD FOR EASY TRANSPORT

BLUETOOTH® CONNECTIVITY AND FREE APP

FOR REMOTE ADJUSTMENTS VIA
SMARTPHONE AND TABLET

EXTENSIVE CONNECTIVITY OPTIONS

WITH MULTIPLE INPUTS/OUTPUTS,
4-BAND PARAMETRIC EQ, APPLICATION
PRESETS, AND DELAY FUNCTIONS



*Requires Android version 14 or higher

Find out more about
our **ICOA® PRO** SERIES
ld-systems.com/ICOAPRO





ICOA® PRO 12 A

12" COAXIAL HIGH-PERFORMANCE PA-LOUDSPEAKER, ACTIVE

System output (Peak)	2000 W
Max. SPL (Peak)	133 dB
Frequency response (-10dB)	53 - 20,000 Hz
Dimensions (W x H x D)	376 x 627.8 x 393.6 mm / 14.8 x 24.7 x 15.5 inch
Weight	23.1 kg / 50.9 lbs



ICOA® PRO 15 A

15" COAXIAL HIGH-PERFORMANCE PA-LOUDSPEAKER, ACTIVE

System output (Peak)	3000 W
Max. SPL (Peak)	135 dB
Frequency response (-10dB)	50 - 20,000 Hz
Dimensions (W x H x D)	417 x 690.7 x 414.8 mm / 16.4 x 27.2 x 16.3 inch
Weight	25.8 kg / 56.9 lbs



ICOA® PRO SUB 21 A

21" BASS-REFLEX SUBWOOFER

System output (Peak)	3000 W
Max. SPL (Peak)	136 dB
Frequency response (-10dB)	29 - fx
Dimensions (W x H x D)	565.5 x 700 x 698.8 mm / 22.3 x 27.6 x 27.5 inch
Weight	57 kg / 125.7 lbs



ROAD-READY DESIGN

12" & 15" Tops feature 6 x M10 rigging points, EasyMount® compatibility, dual-tilt flange (0°/5°), and lightweight ABS housing with gas injection. Subwoofer with rugged birch plywood housing, Polyurea coating, 8 ergonomic handles, stacking grooves and dual M20 mounting threads.

CARDIOID & DELAY FEATURES

Built-in cardioid presets and delay (up to 50 m), crossover selection (80/100/120 Hz) and low-latency monitor presets ensuring clean, directional low-end control.

21" SUB – COMPACT BUILD

Massive low-end performance down to 29 Hz – in a cabinet barely larger than a typical 18" subwoofer, ideal for mobile setups and fixed installations.

APP CONTROL & BLUETOOTH®

Free ICOA PRO app (iOS/Android) with access to all DSP functions: PEQ, presets, delay, cardioid modes – plus Bluetooth® 5.1 streaming and TWS stereo pairing for fast, streamlined setups.

ANNY® SERIES

TURN ANY PLACE INTO YOUR STAGE.

ANNY® - your battery-powered sound solution for truly anywhere: in the city, in the garden, at gatherings, at sports events, at school and dance events, in bars, at parties. Wherever you are, ANNY® provides professional sound and creates unforgettable moments. With a wide range of inputs, ANNY® enables a variety of setups with a mix of speech and music. With ANNY® at your side, you'll create a great atmosphere and professional sound - wherever you are. So go ahead and turn any place into your stage.



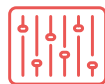
Long lasting battery



Portable & easy to carry



Up to two
wireless microphones



Integrated mixer



Bluetooth



Loud & clear sound

**2X 6.3 MM / XLR COMBO,
2X CINCH / 3.5 MM JACK (AUX)**



**AVAILABLE IN
DIFFERENT COLOURS**

TILT BACK CABINET
TO SWITCH LISTENING ANGLES

MAXIMUM PORTABILITY
DUE TO WHEELS AND TELESCOPIC HANDLE

WIRELESS MODULES
HANDHELD & HEADSET INCL. BODYPACK

TRUE WIRELESS STEREO

**INTEGRATED
6-CHANNEL MIXER**
WITH 3-BAND EQ,
5 APPLICATION PRESETS
(MUSIC, LIVE, VOCAL, ECO,
FLAT) AND EFFECTS SUCH
AS REVERB & DELAY

**REPLACEABLE
BATTERY**
TO EXTEND THE
OPERATING TIME





ANNY® 8

8" PORTABLE BATTERY-POWERED BLUETOOTH® PA LOUDSPEAKER WITH MIXER

System power (Peak)	160 W
Max. SPL (Peak)	117 dB
Frequency response (-10 dB)	53 - 20,000 Hz
Dimensions (W x H x D)	249 x 390 x 282 mm / 9.8 x 15.4 x 11.1 inch
Weight	8.8 kg / 19.4 lbs



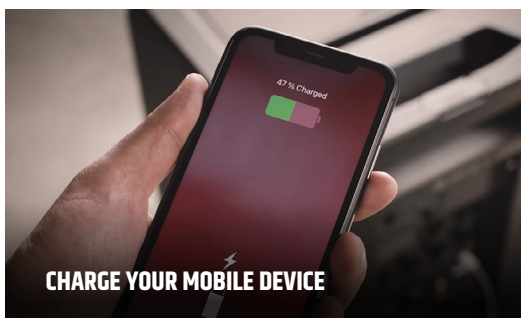
ANNY® 10

10" PORTABLE BATTERY-POWERED BLUETOOTH® PA SYSTEM WITH MIXER

System power (Peak)	160 W
Max. SPL (Peak)	118 dB
Frequency response (-10 dB)	45 - 20,000 Hz
Dimensions (W x H x D)	361 x 566 x 300 mm / 14.2 x 22.3 x 11.8 inch
Weight	18.2 kg / 40.2 lbs



EXTRA STORAGE SPACE INSIDE ANNY® 10



CHARGE YOUR MOBILE DEVICE



PUT ANNY® ON A POLE

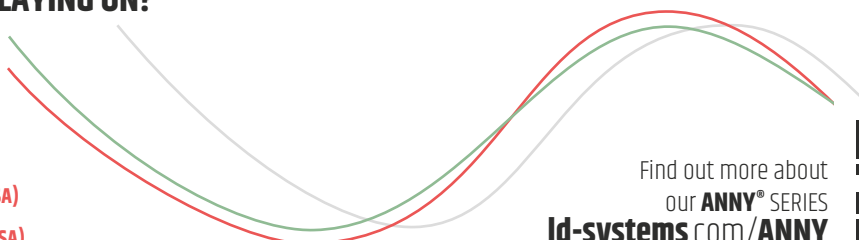


MAKE YOUR VOICE HEARD

The ANNY wireless modules use Ultra High Frequency (UHF) to achieve an ultra-stable wireless range of up to an impressive 80 m (250 ft).

WHAT FREQUENCY ARE YOU PLAYING ON?

- 823 - 832 MHz / 863 - 865 MHz: **B8**
- 655 - 679 MHz: **B6**
- 584 - 608 MHz: **B5**
- 514 - 542 MHz: **B5.1 (only available in USA)**
- 470 - 490 MHz: **B4.7 (only available in USA)**



Find out more about
our **ANNY®** SERIES
[id-systems.com/ANNY](https://www.id-systems.com/ANNY)



MON G3 SERIES

One step beyond.

POWERED COAXIAL STAGE MONITORS

Unlocking the potential of advanced stage monitoring for musicians, DJs and audio engineers. This thought guided our developers as they completely reimagined the concept of our MON stage monitor series to create the perfect package. A harmonious blend of advanced acoustics, clever features, intuitive operation, durable materials and the elegant LD Systems design propels the new MON G3 Series one step beyond.



EXTRA STRONGSTEEL FRONT GRILL
FOR EFFECTIVE PROTECTION

**DISCREET ROTATABLE
BRAND LOGO**

BASS REFLEX PORT

PowerCon COMPATIBLE FOR RELIABLE
POWER CONNECTION & DAISY CHAINING

1.75" TITANIUM DIAPHRAGM

TUNABLE NOTCH FILTER

4 SOUND PRESETS
& 3-BAND EQ





MON 8 A G3

MON 8 A G3

8" POWERED COAXIAL STAGE MONITOR

System power (Peak)	1200 W
Max. SPL (Peak)	121 dB
Frequency response (-10 dB)	59 - 20,000 Hz
Dimensions (W x H x D)	340 x 278 x 368 mm / 13.4 x 10.9 x 14.5 inch
Weight	13.2 kg / 29.1 lbs



MON 10 A G3

MON 10 A G3

10" POWERED COAXIAL STAGE MONITOR

System power (Peak)	1200 W
Max. SPL (Peak)	126 dB
Frequency response (-10 dB)	58 - 20,000 Hz
Dimensions (W x H x D)	380 x 305 x 426 mm / 15 x 12 x 16.7 inch
Weight	15.21 kg / 33.5 lbs



MON 12 A G3

MON 12 A G3

12" POWERED COAXIAL STAGE MONITOR

System power (Peak)	1200 W
Max. SPL (Peak)	127 dB
Frequency response (-10 dB)	55 - 20,000 Hz
Dimensions (W x H x D)	425 x 315 x 453 mm / 16.7 x 12.4 x 17.8 inch
Weight	17.4 kg / 38.4 lbs



MON 15 A G3

MON 15 A G3

15" POWERED COAXIAL STAGE MONITOR

System power (Peak)	1200 W
Max. SPL (Peak)	129 dB
Frequency response (-10 dB)	48 - 20,000 Hz
Dimensions (W x H x D)	505 x 340 x 517 mm / 19.9 x 13.4 x 20.4 inch
Weight	23.15 kg / 51 lbs

MAUI® G3 MIX

SMALL NEVER SOUNDED SO BIG.

Everything on-board!

With the MAUI G3 Mix versions, you no longer need a mixing console. The integrated 6-channel mixer offers you a wide range of possibilities thanks to mic / Hi-Z / line inputs. This means that you can connect microphones, guitars, basses, keyboards or various players directly and mix and filter the signals. By connecting two MAUI-G3-MIX systems via SysLink® to a stereo setup, the number of available analogue inputs is doubled. Of course, direct streaming via Bluetooth 5.0 is also available.

Menu control is extremely intuitive thanks to the control panel with LC display and three rotary-push controls. You can adjust effects, EQ, dynamics and monitor signals in just a few simple steps - even for each individual channel.



CARDIOID COLUMN
FOR CONTROLLED DISPERSION
IN THE LOW-MID FREQUENCIES

MID-RANGE PHASE-PLUGS
FOR IMPROVED CONSTANT
HORIZONTAL DIRECTIVITY

**ULTRA TOUGH IMPACT
RESISTANT POLYUREA COATING**

IN/OUT
INPUT: 2X MONO, 1X STEREO AND 1X BLUETOOTH
OUTPUT: 2X MONITOR, 1X SYSTEM-OUT

DEEPER BASS REPRODUCTION
DOWN TO 37 / 39 HZ THANKS TO 12"
(MAUI 28 G3) OR 2 X 8" (MAUI 11 G3)
SUBWOOFER

**FLOW-OPTIMISED
BASS-REFLEX PORTS**



Find out more about our **MAUI® G3 MIX SERIES**
[id-systems.com/MAUIG3MIX](https://www.id-systems.com/MAUIG3MIX)



MAUI Mix for iOS and Android



MAUI® 11 G3 MIX (W)

PORTABLE CARDIOID COLUMN PA SYSTEM WITH MIXER

System output (Peak)	1460 W
Max. SPL (Peak)	125 dB
Woofers	2 x 1" tweeter / 6 x 3.5" mid / 2 x 8" sub
Overall height	2052 mm / 80.8 inch
Weight	31.2 kg / 68.8 lbs



MAUI® 28 G3 MIX (W)

COMPACT CARDIOID COLUMN PA SYSTEM WITH MIXER

System output (Peak)	2060 W
Max. SPL (Peak)	127 dB
Woofers	2 x 1" tweeter / 12 x 3.5" mid / 12" sub
Overall height	2052 mm / 80.8 inch
Weight	35.9 kg / 79.1 lbs



INTEGRATED 6-CHANNEL MIXER

WITH ON-BOARD EFFECTS, 5-BAND EQ, DYNAMICS & FOOTSWITCH INPUT

USER-FRIENDLY MENU CONTROL

EXTREMELY INTUITIVE THANKS TO THE CONTROL PANEL WITH COLOR DISPLAY AND THREE ROTARY-PUSH CONTROLS

SYSLINK®

CONNECT TWO MAUI G3 MIX SYSTEMS VIA SYSLINK® TO CREATE A STEREO SETUP AND DOUBLE THE NUMBER OF AVAILABLE CHANNELS

FREE APP

WITH EASY AND EXPERT MODE FOR REMOTE ADJUSTMENTS VIA SMARTPHONE AND TABLET

MAUI® SERIES – Sleek. Easy. Mighty.

The powered MAUI® column systems by LD Systems offer an especially compact complete PA solution: they are very easy to transport, can be set up in seconds, and blend into any setting thanks to their unobtrusive appearance. The vertical array configuration, digital signal processing, and individualized amplification of the frequency bands by separate power amplifiers ensure an especially large dispersion angle and extremely homogeneous sound distribution in the audience area. With their impressive audio performance and simple handling, the LD MAUI® PA systems are suitable for a surprisingly wide range of applications.



SUPER WIDE 120° HORIZONTAL DISPERSION

DynX® DSP (Gen. 2)
FOR DISTORTION-FREE SOUND
EVEN AT MAXIMUM VOLUME

BLUETOOTH® CONNECTIVITY
FOR HIGH QUALITY AUDIO STREAMING

CARDIOID COLUMN
FOR CONTROLLED DISPERSION
IN THE LOW-MID FREQUENCIES

**ALL MAUIS AVAILABLE
IN BLACK OR WHITE**

MAUI® 11 G3



Find out more about our **MAUI® SERIES**
[ld-systems.com/MAUI](https://www.ld-systems.com/MAUI)



MAUI® 44 G2

CARDIOID POWERED COLUMN PA SYSTEM

System power (Peak)	3000 W
Max. SPL (Peak)	132 dB
Woofers	4 x 1" tweeter / 12 x 3.5" mid / 15" sub
Overall height	2256 mm / 88.8 inch
Weight	47.6 kg / 104.9 lbs



MAUI® 28 G3

COMPACT POWERED COLUMN PA SYSTEM

System power (Peak)	2060 W
Max. SPL (Peak)	127 dB
Woofers	2 x 1" tweeter / 12 x 3.5" mid / 12" sub
Overall height	2052 mm / 80.8 inch
Weight	35.4 kg / 78 lbs



MAUI® 11 G3

PORTABLE POWERED COLUMN PA SYSTEM

System power (Peak)	1460 W
Max. SPL (Peak)	125 dB
Woofers	2 x 1" tweeter / 6 x 3.5" mid / 2 x 8" sub
Overall height	2052 mm / 80.8 inch
Weight	30.7 kg / 67.7 lbs



MAUI® 5

ULTRA PORTABLE POWERED COLUMN PA SYSTEM WITH MIXER

System power (Peak)	400 W
Max. SPL (Peak)	120 dB
Woofers	4 x 3" mid / 8" sub
Overall height	1985 mm / 78.1 inch
Weight	11.3 kg / 24.9 lbs



MAUI® 5 GO

ULTRA-PORTABLE BATTERY-POWERED COLUMN PA SYSTEM - 5200 mAh

System power (Peak)	400 W
Max. SPL (Peak)	120 dB
Woofers	4 x 3" mid / 8" sub
Overall height	1985 mm / 78.1 inch
Weight	12.9 kg / 28.4 lbs



MAUI® 5 GO 100

ULTRA-PORTABLE BATTERY-POWERED COLUMN PA SYSTEM - 3200 mAh

System power (Peak)	400 W
Max. SPL (Peak)	120 dB
Woofers	4 x 3" mid / 8" sub
Overall height	1985 mm / 78.1 inch
Weight	12.4 kg / 27.3 lbs

MAUI® P900 (W/G/B)

POWERED COLUMN PA SYSTEM BY PORSCHE DESIGN STUDIO

System power (Peak)	2800 W
Max. SPL (Peak)	131 dB
Woofers	32 x 1" tweeter / 16 x 2.8" mid / 2 x 10" sub
Overall height	2173 mm / 85.6 inch
Weight	46 kg / 101.4 lbs



Expand your horizon at:
Id-systems.com/MAUIP900

DAVE G4X SERIES

PLUG. PLAY. PARTY.

COMPACT 2.1 POWERED PA SYSTEMS

DAVE – a name that at LD Systems stands for powered 2.1 PA systems which offer everything DJs and musicians need: a powerful and universally applicable sound, sophisticated functions, and compact dimensions. With the DAVE G4X Series, LD Systems is now starting the revolution and developing the extremely popular PA systems from scratch. With its newly developed 2.1 design, the G4X Series forms a perfectly-matched, compact system with professional acoustic properties. Set it up, plug it in – and enjoy the sounds! In addition, the DAVE G4X Series now features an integrated 6-channel mixer including reverb, as well as enhanced connectivity options such as Bluetooth® and SPDIF.



MULTIBAND LIMITER

INTEGRATED 6 CHANNEL MIXER WITH EQ AND REVERB

BLUETOOTH® AND SPDIF SIGNAL INPUTS



CLASS D AMPLIFIER WITH PASSIVE COOLING TO PREVENT FAN NOISE

CLUSTER MODE NEW PRESET FOR CLUSTER SETUPS

Find out more about our **DAVE G4X SERIES**
ld-systems.com/DAVEG4X



DAVE 10 G4X

DAVE 10 G4X

COMPACT 2.1 POWERED SOUND SYSTEM

System power (Peak)	680 W
Max. SPL (Peak)	120 dB
Woofers	2 x 1" tweeter / 2 x double 4" mid / 10" sub
Frequency response (-10 dB)	37 - 20,000 Hz
Weight	24.5 kg / 54 lbs



DAVE 12 G4X

DAVE 12 G4X

COMPACT 2.1 POWERED PA SYSTEM

System power (Peak)	1460 W
Max. SPL (Peak)	127 dB
Woofers	2 x 0.5" tweeter / 2 x 6.5" mid / 12" sub
Frequency response (-10 dB)	37 - 20,000 Hz
Weight	43.7 kg / 96.3 lbs

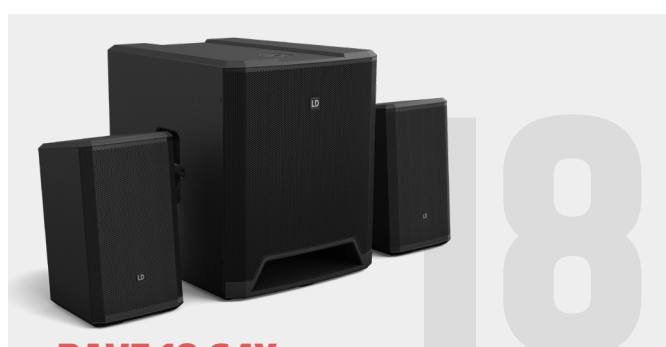


DAVE 15 G4X

DAVE 15 G4X

COMPACT 2.1 POWERED PA SYSTEM

System power (Peak)	2060 W
Max. SPL (Peak)	130 dB
Woofers	2 x double 0.5" tweeter / 2 x 8" mid / 15" sub
Frequency response (-10 dB)	33 - 20,000 Hz
Weight	53.9 kg / 118.8 lbs



DAVE 18 G4X

DAVE 18 G4X

COMPACT 2.1 POWERED PA SYSTEM

System power (Peak)	4000 W
Max. SPL (Peak)	134 dB
Woofers	2 x double 0.5" tweeter / 2 x 8" mid / 18" sub
Frequency response (-10 dB)	30 - 20,000 Hz
Weight	63.2 kg / 139.3 lbs

ICOA® SERIES – Spin your sound right round



Enjoy the freedom of blasting the sound as loud and hard as you want for your audience. The horn-loaded woofer covers the complete bandwidth of sound with rich, deep bass. The choice is all yours: use the coaxial speakers as either full range loudspeakers or as monitor boxes – in 12" or 15" format. After all, both the powered and passive loudspeakers in the LD Systems ICOA® Series are true all-rounders: their coaxial configuration allows the BEM-optimised CD horn – and the logo – to be easily rotated 90°.

The result: you can perfectly position your powered loudspeaker at the right transmission angle. The sound is brilliant and super powerful in all positions, and the design is truly impressive, no matter if installed as a main system or horizontal monitor box. Every now and then all you need is a new perspective for greater freedom!

4 ALUMINIUM HANDLES
WITH AN ERGONOMIC RUBBER SURFACE

**COAXIAL ROTATABLE
HORN DESIGN**

36 MM DUAL-TILT STAND ATTACHMENT
WITH 0° AND 5° TILT ANGLES AND
55° FLOOR MONITOR ANGLE

**BASS REFLEX
DESIGN**

Find out more about our **ICOA** SERIES
ld-systems.com/ICOA





ICOA® 12

12" PASSIVE COAXIAL PA LOUDSPEAKER

System power (Peak)	1000 W
Max. SPL (Peak)	123 dB
Dimensions (W x H x D)	375 x 635 x 396 mm 14.8 x 25 x 15.6 inch
Weight	19.8 kg / 43.7 lbs



ICOA® 12 A (BT)

12" POWERED COAXIAL PA LOUDSPEAKER
(WITH BLUETOOTH)

System power (Peak)	1200 W
Max. SPL (Peak)	126 dB
Dimensions (W x H x D)	375 x 635 x 396 mm 14.8 x 25 x 15.6 inch
Weight	19.95 kg / 44 lbs



ICOA® SUB 15 A

15" POWERED BASS REFLEX PA SUBWOOFER

System power (Peak)	1600 W
Max. SPL (Peak)	131 dB
Dimensions (W x H x D)	510 x 598 x 552 mm 20.1 x 23.5 x 21.7 inch
Weight	32.5 kg / 71.7 lbs



ICOA® 15

15" PASSIVE COAXIAL PA LOUDSPEAKER

System power (Peak)	1000 W
Max. SPL (Peak)	125 dB
Dimensions (W x H x D)	416 x 695 x 415 mm 16.4 x 27.4 x 16.3 inch
Weight	24.7 kg / 54.5 lbs



ICOA® 15 A (BT)

15" POWERED COAXIAL PA LOUDSPEAKER
(WITH BLUETOOTH)

System power (Peak)	1200 W
Max. SPL (Peak)	128 dB
Dimensions (W x H x D)	416 x 695 x 415 mm 16.4 x 27.4 x 16.3 inch
Weight	24.3 kg / 53.6 lbs



ICOA® SUB 18 A

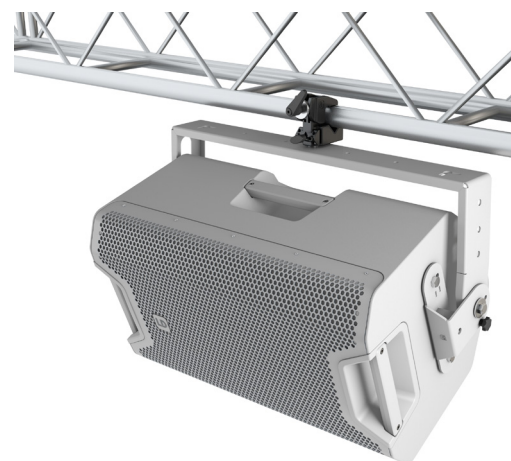
18" POWERED BASS REFLEX PA SUBWOOFER

System power (Peak)	2400 W
Max. SPL (Peak)	133 dB
Dimensions (W x H x D)	626 x 672 x 637 mm 24.6 x 26.5 x 25.1 inch
Weight	44.3 kg / 97 lbs

EASY INSTALLATION

with the Universal Mounting Bracket for ICOA 12"/15"

- Universal bracket for horizontal or vertical wall attachment
- Truss mounting with optionally available clamp
- Easy-Click System
- Rotatable in 10° increments up to 180° with scaling indicator
- Cable feedthrough
- Load capacity up to 27 kg / 59.5 lbs



CURV 500® SERIES – Array reinvented

With the patented CURV 500®, LD Systems presents the first really portable array with WaveAhead® technology for high-definition audio quality with an amazing sound pressure and excellent balance. Thanks to the expandable vertical and horizontal coverage, the system is completely scalable. The unibody aluminium construction of the CURV 500® array satellites sets new standards and is essential for the outstanding sound quality of the system. The unique SmartLink® plug-and-play adapter also offers numerous mounting options. For all-in-one comfort, the 4-channel mixer integrated in the CURV 500® provides a range of digital effects, as well as modern Bluetooth® wireless technology. Three sets are available for mobile and fixed installation. They feature a low weight and a wide, far-ranging sound dispersion. Thanks to optional extensions, the systems can be perfectly expanded further. Black and white housing designs for the AV Set allow for harmonious integration into the surrounding architecture.



WAVEAHEAD® TECHNOLOGY SYMMETRICAL HORIZONTAL DISPERSION

**WIDE DISPERSION OF MID
AND HIGH FREQUENCIES**

VERTICAL TWEETER ARRAY

**INTEGRATED
4-CHANNEL
MIXING DESK**





CURV 500® TS

PORTABLE ARRAY SYSTEM
TOURING SET

System power (Peak)	2000 W
Max. SPL (Peak)	131 dB
Woofers	18 x 1" tweeter / 6 x 4" mid / 15" sub
Subwoofer (W x H x D)	600 x 437 x 587 mm 23.6 x 17.2 x 23.1 inch
Weight	48.2 kg / 106.3 lbs



CURV 500® ES

PORTABLE ARRAY SYSTEM
ENTERTAINER SET

System power (Peak)	920 W
Max. SPL (Peak)	128 dB
Woofers	12 x 1" tweeter / 4 x 4" mid / 10" sub
Subwoofer (W x H x D)	325 x 383 x 491 mm 12.8 x 15.1 x 19.3 inch
Weight	26.8 kg / 59.1 lbs



CURV 500® PS

PORTABLE ARRAY SYSTEM
POWER SET

System power (Peak)	1840 W
Max. SPL (Peak)	134 dB
Woofers	24 x 1" tweeter / 8 x 4" mid / 2 x 10" sub
Subwoofer (W x H x D)	325 x 383 x 491 mm 12.8 x 15.1 x 19.3 inch
Weight	59.1 kg / 130.3 lbs



CURV 500® AVS (W)

PORTABLE ARRAY SYSTEM
A/V SET

System power (Peak)	720 W
Max. SPL (Peak)	122 dB
Woofers	3 x 1" tweeter / 1 x 4" mid / 1 x 10" sub
Subwoofer (W x H x D)	325 x 383 x 491 mm / 12.8 x 15.1 x 19.3 inch
Weight	22.8 kg / 50.3 lbs



Find out more about our **CURV 500** SERIES
ld-systems.com/CURV500



STINGER® G3 SERIES

MULTIFUNCTIONAL PA SPEAKERS & SUBWOOFERS

Exceptional sound, reliable performance and unparalleled value across the board - that's LD Systems' STINGER® G3 Series. Real workhorses for demanding applications, these loudspeakers have been engineered to provide truly professional sound reinforcement solutions. The STINGER® G3 line includes active and passive models that are simply outstanding in their class. Custom designed drivers with high power handling and BEM modelled waveguides deliver immaculate audio quality, extended low frequency response and coherent coverage. Sporting lightweight Class D power stages, active STINGER® G3 models are capable of huge sound pressure levels. The multi-purpose tops feature up to a massive 500 watts RMS output and carefully tailored presets for flat response, fullrange, satellite or floor monitor applications.

36 MM DUAL-TILT POLE MOUNT
FOR 0° OR 5° MOUNTING ANGLES

BEM OPTIMIZED HF WAVEGUIDE
FOR UNIFORM COVERAGE

APPLICATION PRESETS
FOR QUICK FREQUENCY
RESPONSE CONTOURING

UP TO 800 W RMS POWER
AND 134 DB MAX SPL

BIRCH PLY CABINET
WITH ULTRA RUGGED
POLYUREA FINISH

LD SYSTEMS DYNX®
DSP TECHNOLOGY
FOR DISTORTION-FREE
PERFORMANCE

HIGH POWER BASS REFLEX PA SUBWOOFERS
WITH CARDIOID SETUP PRESETS





STINGER® 8 G3
2-WAY PASSIVE 8" PA LOUDSPEAKER

Load rating (RMS)	250 W
Max. SPL (Peak)	119 dB
Dimensions (W x H x D)	270 x 457 x 290 mm 10.6 x 17.9 x 11.4 inch
Weight	9.9 kg / 21.8 lbs



STINGER® 10 G3
2-WAY PASSIVE 10" PA LOUDSPEAKER

Load rating (RMS)	300 W
Max. SPL (Peak)	121 dB
Dimensions (W x H x D)	325 x 527 x 318 mm 12.8 x 20.7 x 12.5 inch
Weight	11.5 kg / 25.4 lbs



STINGER® 12 G3
2-WAY PASSIVE 12" PA LOUDSPEAKER

Load rating (RMS)	400 W
Max. SPL (Peak)	125 dB
Dimensions (W x H x D)	390 x 627 x 377 mm 20.1 x 23.5 x 21.7 inch
Weight	19.4 kg / 71.7 lbs



STINGER® 15 G3
2-WAY PASSIVE 15" PA LOUDSPEAKER

Load rating (RMS)	500 W
Max. SPL (Peak)	127 dB
Dimensions (W x H x D)	480 x 737 x 455 mm 18.9 x 29 x 17.9 inch
Weight	25.7 kg / 60.6 lbs



STINGER® 28 G3
2-WAY PASSIVE 2x8" PA LOUDSPEAKER

Load rating (RMS)	400 W
Max. SPL (Peak)	125 dB
Dimensions (W x H x D)	270 x 756 x 290 mm 10.6 x 29.8 x 11.4 inch
Weight	19.3 kg / 42.5 lbs



STINGER® SUB 15 G3
PASSIVE 15" BASS REFLEX PA SUBWOOFER

Load rating (RMS)	600 W
Max. SPL (Peak)	127 dB
Dimensions (W x H x D)	576 x 477 x 624 mm 22.7 x 18.8 x 24.6 inch
Weight	29.7 kg / 65.5 lbs



STINGER® SUB 18 G3
PASSIVE 18" BASS REFLEX PA SUBWOOFER

Load rating (RMS)	800 W
Max. SPL (Peak)	129 dB
Dimensions (W x H x D)	677 x 547 x 740 mm 26.7 x 21.5 x 29.1 inch
Weight	40.6 kg / 89.5 lbs

HIGH POWER FOR YOUR PASSIVE SPEAKERS **DSP 44 K**



Find out more about our **STINGER G3** SERIES
ld-systems.com/STINGERG3



STINGER® 8 A G3

2-WAY ACTIVE 8" PA LOUDSPEAKER

Load rating (RMS)	300 W
Max. SPL (Peak)	125 dB
Dimensions (W x H x D)	270 x 457 x 290 mm 10.6 x 17.9 x 11.4 inch
Weight	10.5 kg / 23.2 lbs



STINGER® 10 A G3

2-WAY ACTIVE 10" PA LOUDSPEAKER

Load rating (RMS)	300 W
Max. SPL (Peak)	127 dB
Dimensions (W x H x D)	325 x 527 x 318 mm 12.8 x 20.7 x 12.5 inch
Weight	12.7 kg / 28 lbs



STINGER® 12 A G3

2-WAY ACTIVE 12" PA LOUDSPEAKER

Load rating (RMS)	500 W
Max. SPL (Peak)	131 dB
Dimensions (W x H x D)	390 x 627 x 377 mm 20.1 x 23.5 x 21.7 inch
Weight	20.1 kg / 44.3 lbs



STINGER® 15 A G3

2-WAY ACTIVE 15" PA LOUDSPEAKER

Load rating (RMS)	500 W
Max. SPL (Peak)	133 dB
Dimensions (W x H x D)	480 x 737 x 455 mm 18.9 x 29 x 17.9 inch
Weight	26.8 kg / 59.1 lbs



STINGER® 28 A G3

2-WAY ACTIVE 2x8" PA LOUDSPEAKER

Load rating (RMS)	500 W
Max. SPL (Peak)	131 dB
Dimensions (W x H x D)	270 x 756 x 290 mm 10.6 x 29.8 x 11.4 inch
Weight	20.5 kg / 45.2 lbs



STINGER® SUB 15 A G3

ACTIVE 15" BASS REFLEX PA SUBWOOFER

Load rating (RMS)	450 W
Max. SPL (Peak)	133 dB
Dimensions (W x H x D)	576 x 477 x 624 mm 22.7 x 18.8 x 24.6 inch
Weight	31.9 kg / 70.3 lbs



STINGER® SUB 18 A G3

ACTIVE 18" BASS REFLEX PA SUBWOOFER

Load rating (RMS)	800 W
Max. SPL (Peak)	135 dB
Dimensions (W x H x D)	677 x 547 x 740 mm 26.7 x 21.5 x 29.1 inch
Weight	42.6 kg / 93.9 lbs

EASY INSTALLATION

WITH OUR WALL AND TRUSS MOUNT ACCESSORIES

- Swivel Wall Mount (8/10/12/15/28)
- Tilt- and Swivel Wall Mount (8/10/12/15/28)
- Truss Mount Clamp Set (8/10)
- Truss Mount Bracket (12/15)



Truss Clamp Set



Tilt- and Swivel Wall Mount



Truss Mount Bracket



Swivel Wall Mount

STINGER SETS



LOUNGE

LOUNGE SET

2 X 8" PA SPEAKER | 1 X 15" SUBWOOFER

Providing easy portability, this compact set is terrific for small gigs and functions that require excellent music and speech reinforcement.

Applications:

DJs | solo entertainers | singer-songwriters | private functions

Audience Size*: 150 music | 200 speech

Active / Passive



EVENT

EVENT SET

2 X 10" PA SPEAKER | 2 X 15" SUBWOOFER

This set is the perfect all-round package for small to medium-sized gigs and functions providing a tight and punchy low end from the two subwoofers.

Applications:

small bands | DJs | private functions

Audience Size*: 200 music | 300 speech

Active / Passive



POWER

POWER SET

2 X 12" PA SPEAKER | 2 X 18" SUBWOOFER

Excellent for live clubs and touring bands, this set is a superb choice wherever highly dynamic music reinforcement with plenty of power and punch is of prime importance.

Applications:

bands | live clubs | large private functions | corporate events
AV presentations

Audience Size*: 250 music | 350 speech

Active / Passive



IMPACT

IMPACT SET

2 X 15" PA SPEAKER | 4 X 18" SUBWOOFER

Delivering a massive low-end with punch and clarity, this set is ideal for outdoor sound reinforcement. With a quartet of subwoofers and two 15" tops, it easily covers medium-sized gigs at town fairs, street festivals and in marquees.

Applications: outdoor sound reinforcement for bands | DJs | large private functions

Audience Size*: 300 music | 400 speech

Active / Passive



GALA

GALA SET

2 X DOUBLE 8" PA SPEAKER | 2 X 18" SUBWOOFER

Including a pair of slim, low-profile satellites and two subwoofers, this set is a great option for events that require excellent speech intelligibility and extended coverage.

Applications:

gala events | corporate conferences | large private functions

Audience Size*: 250 music | 350 speech

Active / Passive



*NOTE: Audience size specifications are approximate only. The actual numbers may vary depending on room acoustics and environment.

U300® / U500® SERIES – Nothing compares to U

The U500® and U300® Series wireless systems have been developed based on user feedback to provide technically advanced yet affordable wireless microphones and in-ear monitoring systems tailored to the needs of professional users. Whether for vocals, instruments or wireless in-ear monitoring, our versatile sets meet your expectations for premium sound, reliability and ease of use.

SOUND QUALITY WITH UP TO 100 METERS OR 300 FEET OF REACH

ONE BODYPACK, WIDE RANGE WITH MINI XLR INPUT, WITH A THREE-POSITION LEVEL SWITCH

UP TO 12 SYSTEMS SIMULTANEOUSLY

INTERCHANGEABLE MIC HEADS



Find out more about our **U500** SERIES
ld-systems.com/U500





U3XX* HHD

WIRELESS MICROPHONE SYSTEM WITH DYNAMIC HANDHELD MICROPHONE

Channels	12
Frequency response	55 Hz - 16 KHz
Rated HF output power	10 mW



U3XX* HHD 2

DUAL WIRELESS MICROPHONE SYSTEM WITH 2X DYNAMIC HANDHELD MICROPHONE

Channels	12
Frequency response	35 Hz - 16 KHz
Rated HF output power	10 mW



U3XX* IEM

IN-EAR MONITORING SYSTEM

Channels	12
Operating modes	Mono/Stereo
Frequency response	50 Hz - 16 KHz
Rated HF output power	10 mW



U5XX* HHD

WIRELESS MICROPHONE SYSTEM WITH DYNAMIC HANDHELD MICROPHONE

Channels	96 (8 groups of 12 channels)
Frequency response	60 Hz - 16 KHz
Rated HF output power	Variable (2/10/30mW)



U5XX* HHD 2

DUAL WIRELESS MICROPHONE SYSTEM WITH 2X DYNAMIC HANDHELD MICROPHONE

Channels	96 (8 groups of 12 channels)
Frequency response	60 Hz - 16 KHz
Rated HF output power	Variable (2/10/30mW)



U5XX* IEM

IN-EAR MONITORING SYSTEM

Channels	96 (8 groups of 12 channels)
Operating modes	Stereo/Focus/Mono
Frequency response	40 Hz - 16 KHz
Rated HF output power	Variable (2/10/30mW)



ALSO AVAILABLE WITH BODYPACK AS GUITAR, HEADSET, LAVALIER OR BRASS INSTRUMENT MIC VERSION.

* WHAT FREQUENCY ARE YOU PLAYING ON?

- 470 - 490 MHz: **U304.7 / U504.7** (only available in USA)
- 514 - 542 MHz: **U305.1 / U505.1** (only available in USA)
- 548 - 607 MHz **U305 / U505**
- 655 - 679 MHz **U306 / U506**
- 823 - 832 MHz / 863 - 865 MHz **U308 / U508**
- 1785 - 1800 MHz **U518**

Find out more about
our **U300 SERIES**
Id-systems.com/U300



About our **mission.**

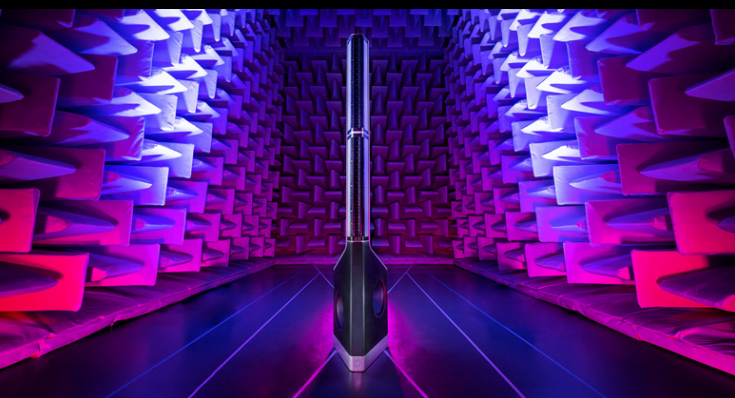
RELIABILITY

Regardless of which concert or event, whether on stage or at a conference, you have to instinctively be able to rely on your sound system. That's why LD Systems® continues to pride itself on delivering high-quality materials and long-lasting workmanship.



USER-FRIENDLINESS

LD Systems® puts the user first, meaning that simple, intuitive, and efficient operation is already factored in at an early stage during development. From ergonomic handles to easily readable LED displays.



PASSION

The same passion that takes hold of a musician on stage is what the engineers and designers at LD Systems® place into our products. These are not only sound technology specialists, but also sound technology enthusiasts, who passionately work out every detail until the sound and design meet the highest of standards.



SOUND PERFORMANCE

Product developers at LD Systems take great care to ensure that the sound you've got in mind becomes a reality. From tweeters to subwoofers, or from mobile PAs to installed systems, our goal is to always represent the latest state of sound technology.



DESIGN LANGUAGE

Thanks to its design-award-winning design language, LD Systems® products are not only a pleasure to be heard but a beauty to behold. The unmistakable LD Systems® Angle, for example, is used time and time again and gives products their special look.





Id-systems.com

your sound.
our mission.



facebook.com/ldsystems
instagram.com/ld_systems_official
youtube.com/ldsystemsvideos

ld-systems.com

LD Systems is a brand of the Adam Hall Group
© 2025 Adam Hall Group. All rights reserved