



# ARMONÍA+ FAQ MANUAL

USING LD SYSTEMS ADA 8K4/12K4 IN ARMONÍA+

# CONTENTS

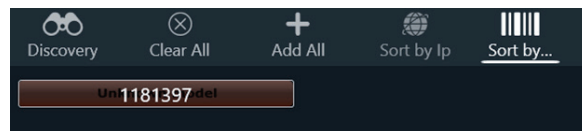
<b>1. CONNECTING ARMONÍA+ WITH THE AMPLIFIER</b>	<b>3</b>
1.1 I CAN'T MATCH MY ADA TO ARMONÍA+	3
1.2 THE MATCHED AMPLIFIER IS FRAMED RED	3
1.3 HOW CAN I CONNECT MY AMPLIFIER WITH THE VIRTUAL AMPLIFIER IN THE WORKSPACE?	3
<b>2. PRESETS AND SNAPSHOTS</b>	<b>3</b>
2.1 HOW DO I LOAD PRESETS IN ARMONÍA+?	3
2.1 HOW CAN I CHECK FOR NEW PRESETS IN ARMONÍA+?	4
2.3 HOW CAN I LOAD SPEAKERS LINKED AS PARALLEL IN ARMONÍA+?	4
2.4 CAN I LOAD PRESETS OF OTHER MANUFACTURERS ONTO MY LD SYSTEMS AMPLIFIER?	4
2.5 HOW CAN I CREATE OWN SPEAKER PRESETS?	4
2.6 HOW CAN I CREATE SNAPSHOTS?	5
<b>3. UPDATING AMPLIFIERS PRESET AND SNAPSHOT LIBRARIES</b>	<b>5</b>
3.1 HOW CAN I UPDATE THE SNAPSHOT LIBRARY ON MY AMPLIFIER?	5
<b>4. ARMONÍA+ AND EXTERNAL FEATURES</b>	<b>5</b>
4.1 CAN I TUNE MY SYSTEM INTERACTIVELY (USING SMAART)?	5
4.2 CAN I CONTROL ARMONÍA+ WITH A PORTABLE DEVICE?	5
<b>5. LD SYSTEMS SPEAKER PRESETS</b>	<b>6</b>
5.1 WHAT IS THE MEANING OF "TWO SPK" PRESETS?	6
5.2 WHAT IS THE MEANING OF LOW-LATENCY PRESETS?	6
5.3 WHICH LD SYSTEMS SPEAKERS ARE SUPPORTED BY THE ADA?	6
<b>6. FURTHER INFORMATION</b>	<b>6</b>
6.1 WHERE CAN I FIND FURTHER INFORMATION ABOUT ARMONÍA+?	6

# 1. CONNECTING ARMONÍA+ WITH THE AMPLIFIER

## 1.1 I CAN'T MATCH MY ADA TO ARMONÍA+

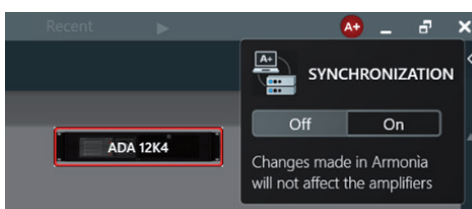
Connections between amplifiers and A+ can be established under "Config" → "Match". If you have trouble:

- Check for matching IP ranges on your computer and the ADA. The amplifiers IP settings can be viewed under "net config".
- Enable the network you want to use in A+ the "communication manager" within the settings.
- If the amplifier is discovered as a number in a brown box, saying "Unknown Model", make sure to install the correct amp model from the "Marketplace":  
A+ (upper left corner) → More → Marketplace → LD Systems ADA 8K4/12K4  
Back in the "Match" menu press "Clear All", wait a few seconds and discover again. If it's still not working, restart A+.

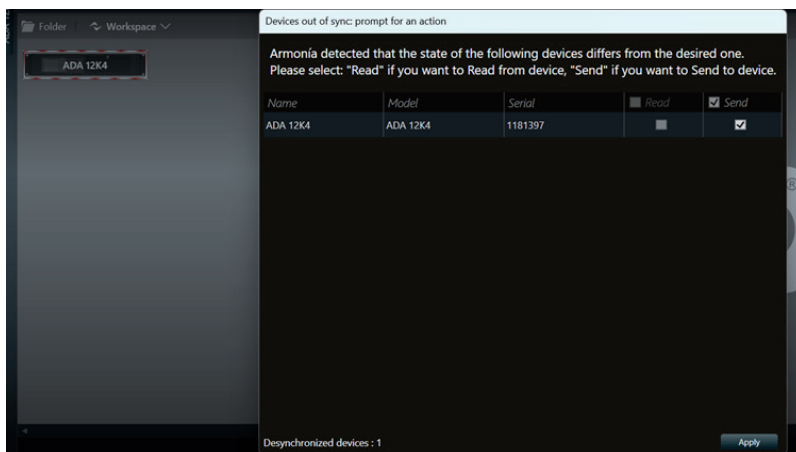


## 1.2 THE MATCHED AMPLIFIER IS FRAMED RED

- If the amp is continuously framed red, synchronization needs to be turned on.



- If the frame is striped (white/red), you will be asked whether you want to read or send from the amplifier after changing the submenu.



## 1.3 HOW CAN I CONNECT MY AMPLIFIER WITH THE VIRTUAL AMPLIFIER IN THE WORKSPACE?

Instead of dragging the amplifier from the "Match" menu to the workspace, just click on it first and second select the virtual amplifier in the workspace.

# 2. PRESETS AND SNAPSHOTS

## 2.1 HOW DO I LOAD PRESETS IN ARMONÍA+?

Download the preset library you want to use in the "Marketplace":

A+ (upper left corner) → More → Marketplace → LD Systems Speaker's Presets

Go into the "Design" menu and "Add" the corresponding "Speaker" to the workspace.

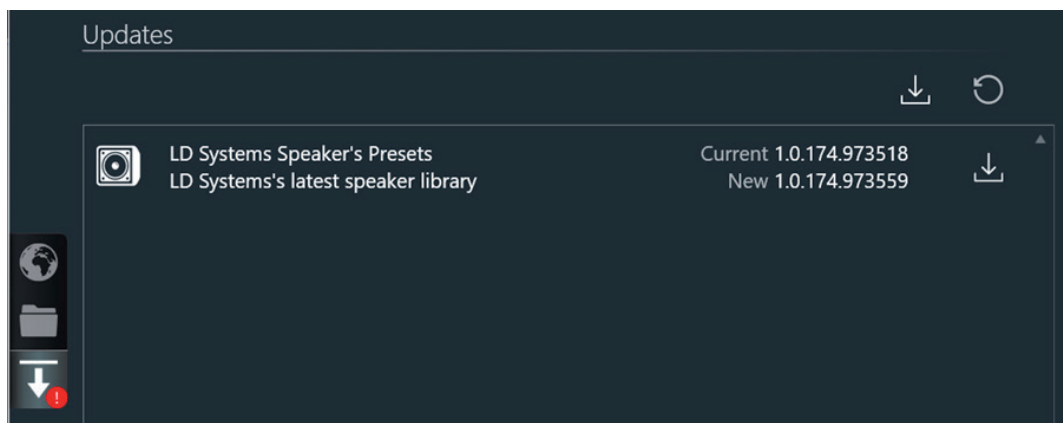
Afterwards "Link" it to an amplifier channel. You can later change the preset of your speaker model again in the "Config" menu.

## 2.1 HOW CAN I CHECK FOR NEW PRESETS IN ARMONIA+?

Go to the "Marketplace":

A+ (upper left corner) → More → Marketplace

If you have already installed the "LD Systems Speaker's Presets", you will be informed of all new features in the "Updates" window.



## 2.3 HOW CAN I LOAD SPEAKERS LINKED AS PARALLEL IN ARMONIA+?

When adding the "Speaker" via the "Design" menu, select the speaker and set the "Quantity" of speakers you want to add.

Enable the "Parallel Mode" and decide for a vertical or horizontal speaker layout. Set the number of speakers that are linked parallel and "Add" them to the workspace. All changes made to a parallel speaker will affect the other the same way!

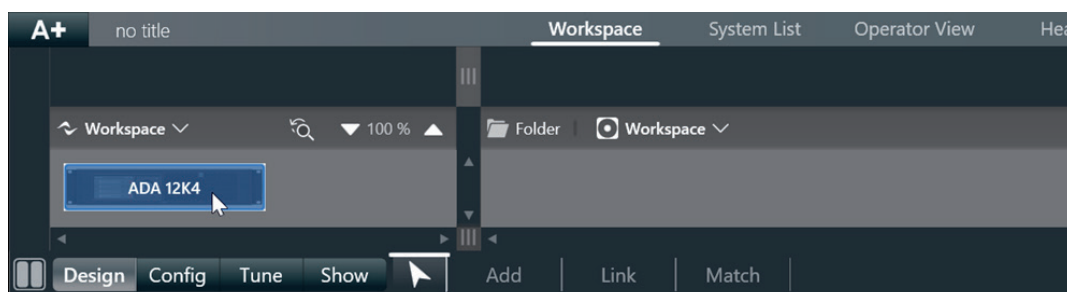
Some LD Systems subwoofers feature presets called "Two SPK". If those presets are available, make sure to use them instead of the parallel-linking function.

## 2.4 CAN I LOAD PRESETS OF OTHER MANUFACTURERS ONTO MY LD SYSTEMS AMPLIFIER?

It is not possible to load presets onto the ADA that are not meant for this amplifier. ADA amplifiers only support the manufacturers presets that can be found in the LD Systems Speaker's Library. Likewise, LD Systems presets cannot be loaded onto amplifiers of other manufacturers (excluding Powersoft). Of course, it is possible to create your own presets on the ADA amplifier.

## 2.5 HOW CAN I CREATE OWN SPEAKER PRESETS?

Add your ADA to the workspace. Then select the mouse symbol in the task bar or use the shortcut (key, to the left of the number "1"). Double clicking the amplifier opens the amplifiers menu.



At your left you can navigate through the menu. In the "Speaker Configuration" window you can write down all the information about your system. It is also possible to join outputs, in case you are creating a multiway preset.

After applying your changes, speaker DSP settings can be configured in the "Ways" layer.

Equalization and crossovers can be set, using IIR and FIR filters. Further equalization can be realized within the "Speaker EQ".

"Ways" also provides the limiter settings. To help you create those properly, Powersoft provides [detailed information](#) on how to use their limiters correctly. When the DSP is set, the speaker preset can be saved in the "Speaker Configuration" menu.

Presets, created in the ADA's amplifier menu, can only be used on amplifiers of the ADA series.

Using a different amplifier (e.g. Powersoft) will only enable you to create and load presets developed for those amplifiers.

## 2.6 HOW CAN I CREATE SNAPSHOTS?

When you are satisfied with the settings of your amplifier, use the mouse symbol in the task bar or use the shortcut (key, to the left of the number "1"). Right click on one or more amplifiers and select "PAM" → "Export". Depending on the number of amplifiers, A+ either creates a "entity preset file" (.pam) or a "preset list file" (.plst). You can import a snapshot the same way.

## 3. UPDATING AMPLIFIERS PRESET AND SNAPSHOT LIBRARIES

### 3.1 HOW CAN I UPDATE THE SNAPSHOT LIBRARY ON MY AMPLIFIER?

Create a snapshot(-list) as explained above and go to the "Preset Manager":

A+ (upper left corner) → More → Preset Manager

Select your amplifier model out of the list on the top and select "Snapshots". Snapshots that were previously created can be imported as a list (if more than one amplifier was previously exported to this list) or imported into a specific snapshot slot. If you want to lock the snapshots you can switch from "Preserve Locking" to "Lock" and set a password.

Toggle "Override" for the slots that should be updated on the amplifier, select the correct device out of the "Available devices" list and press "Apply [to Selected]". It is possible to update multiple amplifiers at the same time.

There is a maximum number of 50 snapshots that can be stored on the amplifier.

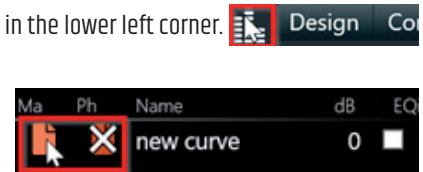
## 4. ARMONÍA+ AND EXTERNAL FEATURES

### 4.1 CAN I TUNE MY SYSTEM INTERACTIVELY (USING SMAART)?

It is possible to load measurement curves into A+. It is also feasible to control your Smaart within A+. To connect Smaart to A+, check your API settings in Smaart and make sure to use corresponding settings under "INTERACTIVE TUNING" in the A+ preferences.

To view the A+ tuning page, open any EQ (e.g. of an Array Group) and press the little spectrum symbol in the lower left corner. Smart measurements can be captured, or files can be imported from here.

To show the curves, enable magnitude and phase by clicking on the icons. The "Advanced EQ" layer gives plenty of options to now tune your system interactively, using the captured, imported or calculated curves.



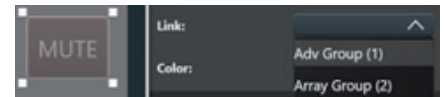
### 4.2 CAN I CONTROL ARMONÍA+ WITH A PORTABLE DEVICE?

It is possible to control A+ with portable devices.

#### Touring Skin:

In the "Touring" skin functions, such as EQ, mute, gain, delay, polarity, metering, etc., can be added. Those functions can be linked to control "AdvGroups" or "ArrayGroups" in the workspace.

When the "View" is ready, use the lock to activate the operator view. 



To access the "Operatorview" go to the settings and enable "OperatorView web server". The Ip addresses shown below lead directly to the online operator view.

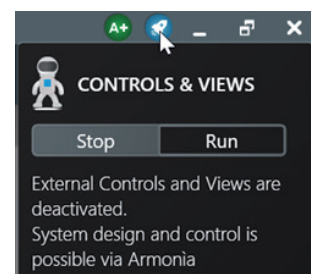
#### Install Skin:

In the "Install" skin it is necessary to add "Zones" and "Controls" in the "Design" menu first (many controls cannot be used with the ADA models). To control the system via the "Web View", it is necessary to also add a "PC Views Host". Clicking on it leads you to the download path for this add-on.

The status of the "Views Host" can be monitored via:

A+ (upper left corner) → More → Views Host

In the "Views Designer", that can be found in the upper bar, zones and controls for the external web or app controlling can be added. If the "View" is ready, "run" the "Controls & Views", found by clicking the rocket symbol in the upper right corner. Download the "Syscontrol App" from the App Store and scan the QR-Code in the "App View" or connect via the "Views Host" IP address for the "Web View".



## 5. LD SYSTEMS SPEAKER PRESETS

### 5.1 WHAT IS THE MEANING OF “TWO SPK” PRESETS?

Depending on the speaker model, LD Systems uses the “True Power Limiter”, which allows the manufacturer to limit the heating of the voice coil even more precisely. When linking two speakers to one output, the power consumed from the ADA doubles itself, but the power limit for the “True Power Limit” stays the same. This causes the limiter to react earlier than necessary. Since lower frequencies consume the most power, this behaviour shows most in subwoofers. That’s why LD Systems provides special presets for the linking of two subwoofers.

### 5.2 WHAT IS THE MEANING OF LOW-LATENCY PRESETS?

Low-Latency Presets reduce the latency of the speaker about 4.5 ms, by using only IIR-filters. Those presets can be perfectly used for monitor applications.

### 5.3 WHICH LD SYSTEMS SPEAKERS ARE SUPPORTED BY THE ADA?

The ADA supports Stinger G3 and most PA speaker series, that are produced after 2025.

## 6. FURTHER INFORMATION

### 6.1 WHERE CAN I FIND FURTHER INFORMATION ABOUT ARMONÍA+?

Powersoft provides an [e-learning platform](#), where users can train there Powersoft and Armonía+ skills. Furthermore they provide a lot of tutorials that can be viewed on [YouTube](#).